

NNHS NEWS LETTER

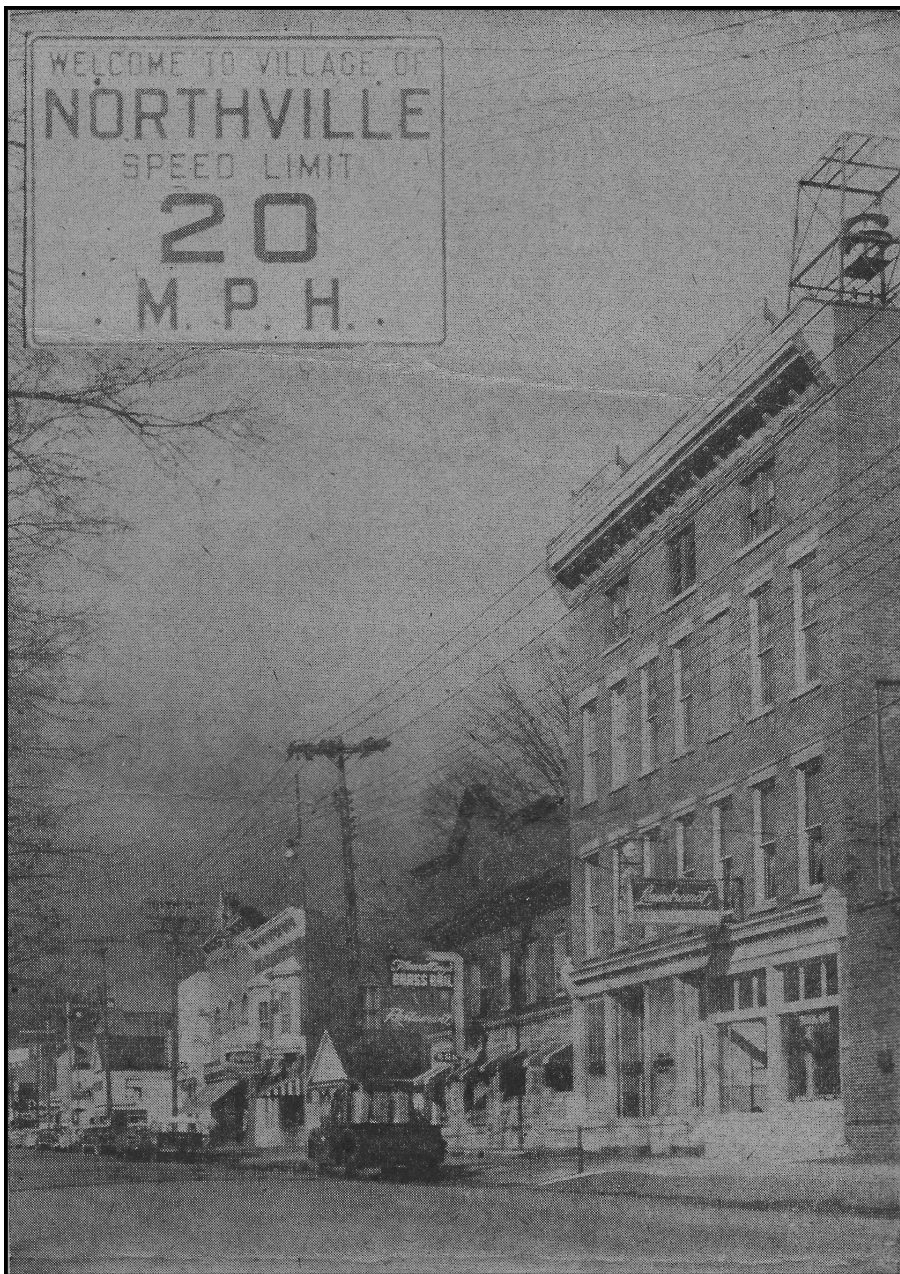
Northville Northampton Historical Society

Issue 76
December 2016
Editor
Gail M Cramer



Speed limit in the Village of Northville 20 miles an hour.

In 1962 the speed limit in the village was changed to 25 miles and hour. The state mandates the speed limit in NY State . The speed limit in villages were again changed to 30 miles an hour as it is today.



Museum/Historical Society News

Thanks to the Beirlein Family who just donated \$400.00 to the NNHS. They held a garage sale from the estate of their mother, Vivian, who was very active in the historical society. I'm sure Vivien would be pleased to know of the donation to a cause that she promoted, loved and spent many hours as a guide in the museum.

Almost everyone in our area owns an Adirondack Chair. Folks in the Northeast have been enjoying the Adirondack chair experience since 1904, when a patent was taken out. It was used as an a convalescent chair with plank for the back and seat and wide arms. It was then called a Westport chair, taking it's name from a small town on Lake Champlain, where it was invented.

The Adirondack chairs appeared after WW I at elaborate lakefront lodges, among them the "great camps". Since then these chairs have become very popular and are now made in a variety of styles, colors and materials.

The word "nap" springs to mind, time slows down and you slow down as you relax in one of these chairs. Which is good because unless you're very young or very agile there's no way to exit the chair quickly. The deep seat requires too many muscles for a speedy departure. But who wants to leave when your enjoying a nap, good book or a cool drink.



This December issue is late because of a computer glitch in my office.

Osborn's Bridge Follow Up

Many comments have been made concerning the article about the history of Osborne's Bridge from last month's newsletter. Dan Mead grew up in Northville, he has shared with us about his family that settled in Osborn's Bridge before 1800. These pictures of Osborn's Bridge are from Dan's family picture album.

Danny Mead wrote:

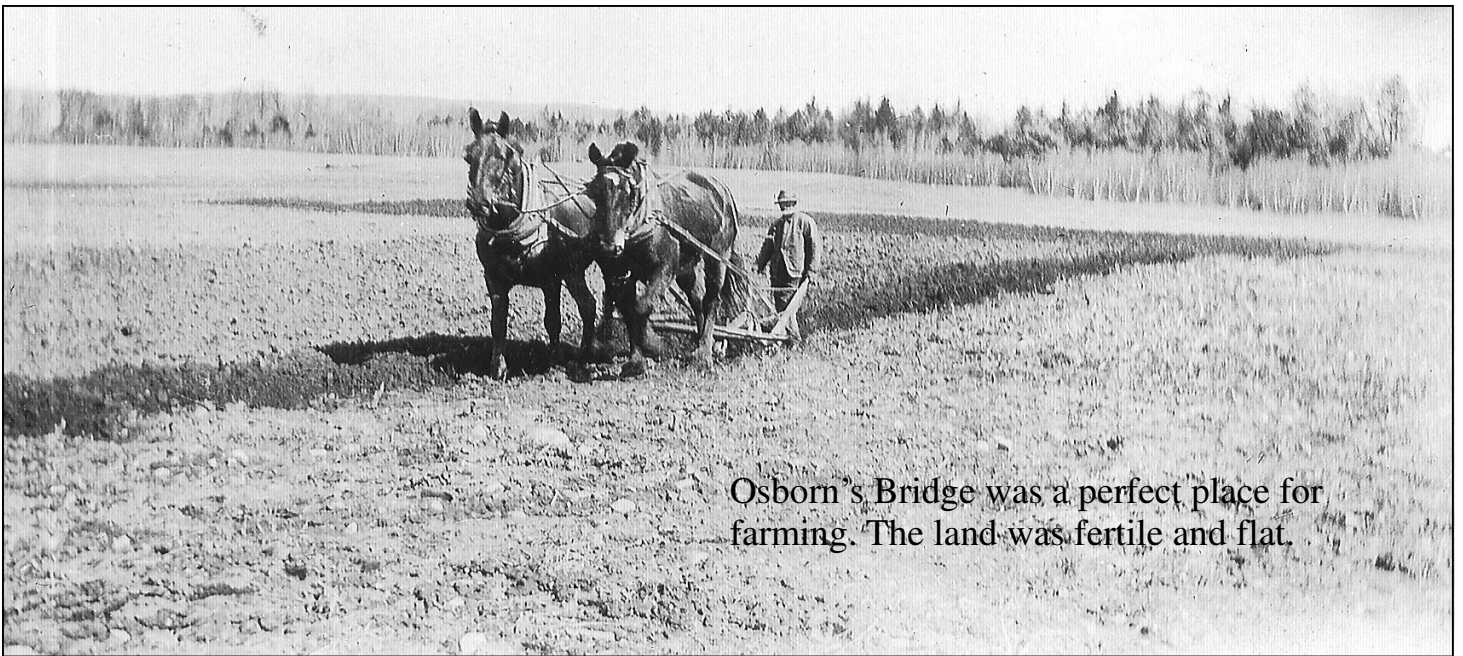
I enjoyed your article for this month's contribution to our area's "beginnings". Osborn's Bridge, was merely a hamlet, never with a population to enable it eligible it to be considered a "village", even though in Washington Frothingham's book refers to it as a village. *My third great grandfather arrived at Osborn's Bridge, (a veteran of the Revolutionary War) after the Revolution and before 1800, coming by two-teams of oxen with most of his 14 children. The early family farm stayed with in my family until the flooding of the Sacandaga Valley and I have a picture taken in 1923 at Osborn's Bridge with my father and his last "yoke" of oxen that he'd broke for work.*



Clark Mead, Danny's father at age 12, with his oxen that he broke from steers.



The Mead house looking north from top of hill, southeast showing blacksmith shop, corner of the highway between shop, and maple trees. (Northampton Beach Campsite behind it.)



Osborn's Bridge was a perfect place for farming. The land was fertile and flat.



**Buckwheat growing on the Mead farm.
Their Dog, Rover**

More pictures may be seen in the Historians office.

Pictures of the Fraiser farm, the Methodist Church, the Noyes family.

Students at the schoolhouse

Morrison family photos

An article by Ethel Wilbur

Flynn family photos.

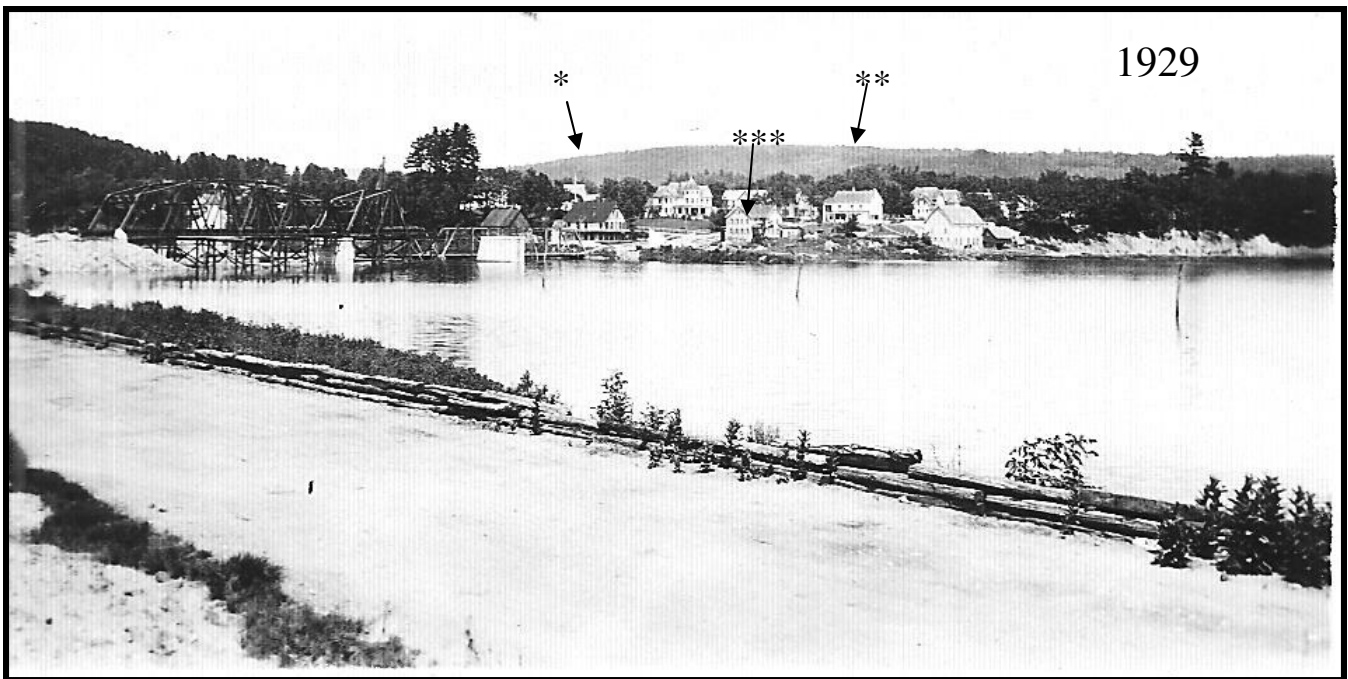
Article about Osborn's Bridge



Danny's Father in front of the family farm house



Cabbage Patch on the Mead Farm



In the foreground is the old road from Sacandaga Park to Northville (it was route 52). The train track was just west of the highway or to left of this picture. Note the new bridge is being built. Across from the Riverview hotel* is the large apartment house*** owned by Ray Hubbell. The land the apartment house was on, was excavated. Notice the house with the pillars**. That is now on the edge of the lake. There was a road along the edge of the river where the power house stood, and 3 houses, which of course are gone.

